



**TWISE**

Twise continues to grow as a start-up company with automation, unmanned, and remote technologies based on mobility, AI, and big data based on various sensors based on next-generation semiconductor based industrial intelligence and future manufacturing innovation ecosystem.

## Chapter. 01

---

### Company Introduction

- Company overview
- Organization Status
- Missions and Visions
- History

## Chapter. 02

---

### Services and Products

- EAP
- TOMg-Dplus
- Non-SECS Converter
- ROS Service
- Tektronix Solution Partner
- Business Areas

## Chapter. 03

---

### Warranty

- Warranty Activities
- Warranty Policies

# Chapter. 01

---

## Company Introduction

- Company Overview • Organization Status • Missions and Visions • History



## TWISE

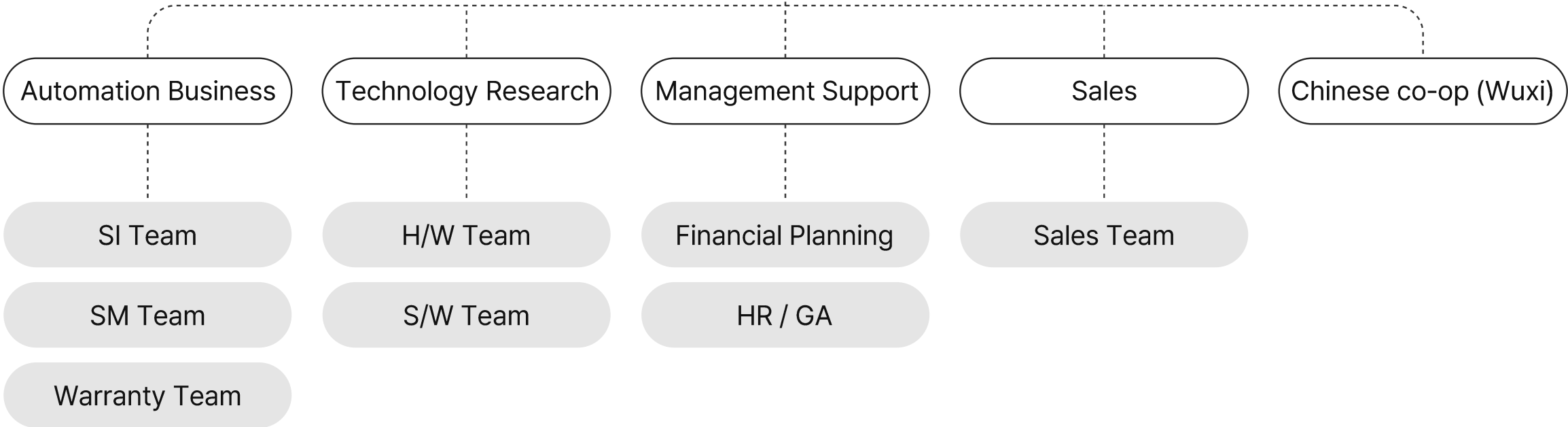
Twise is a start-up enterprise that coincides with ICT(Information and Communications Technologies) based industry intellectualization and the fostering of an innovation ecosystem of future manufacture, owns automation/unmanned/remoting technology that uses mobility and AI big data based on various next-generation semiconductor-based sensors, and is continuing to grow.

- Company Name Twise Co., Ltd
- CEO David Jung
- Date of Establishment 2017. 10. 17
- Registration Number 316-81-27785
- Business Areas Provision of equipment/factory automization solutions and services in the manufacturing field, supply of AI IoT Modules, etc.
- Location 102-708, 239, Jeongjail-ro, Bundang-gu, Seongnam-si, Gyeonggi-do

# Chapter 01 | Company Introduction – Organization Status



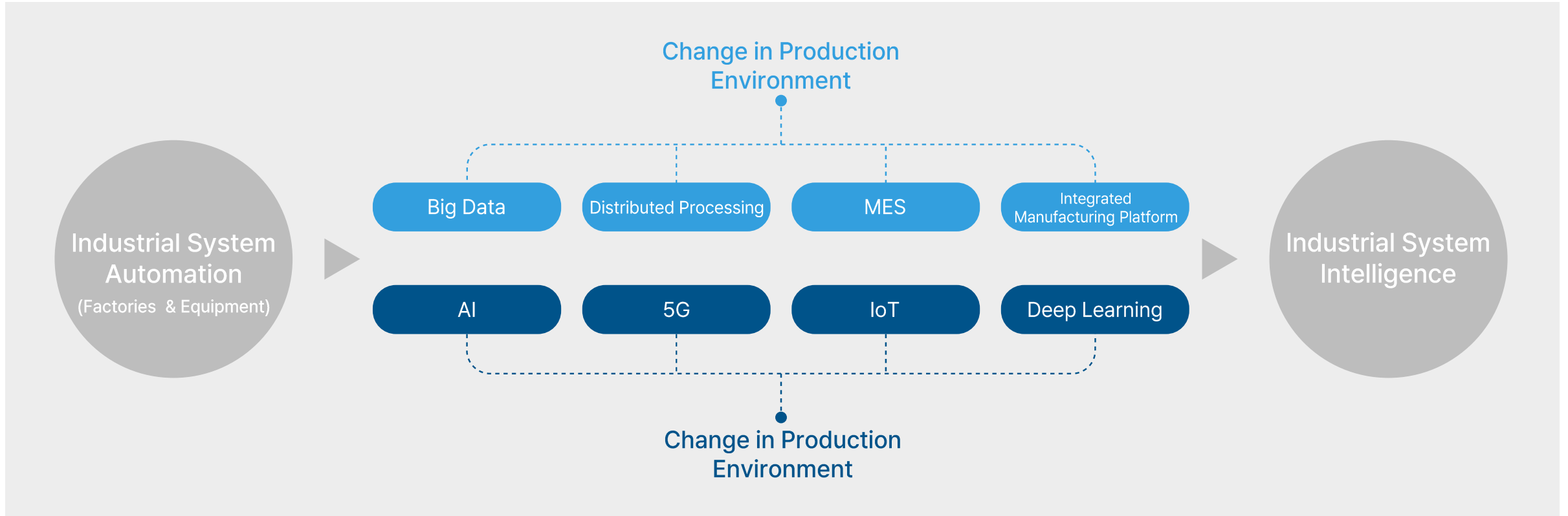
We possess labor force that can implement not only **semiconductors** but also **smart factories of the general manufacturing industry** through automation software solutions and combination with engineering service communication.



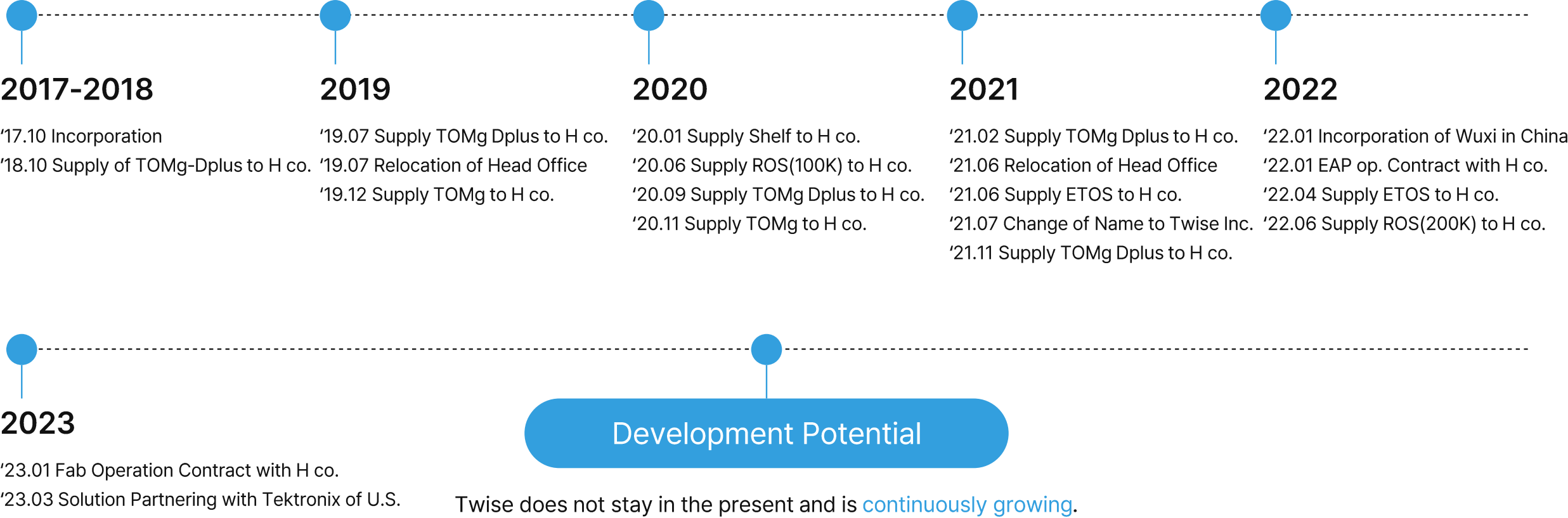
# Chapter 01 | Company Introduction – Missions and Visions

## Missions and Visions

We are **engaged in building intelligence based industrial systems** that are capable of the integrated management of production activities through the collection and management of all events and data that occur on production sites and efficiently managing all resources by analyzing/extracting all the accumulated data using Big Data as our main business.



# Chapter 01 | Company Introduction – History



# Chapter. 02

---

## Services and Products

• EAP • TOMg-Dplus • Non-SECS Converter • ROS Service • Tektronix Solution Partner • Business Areas



# Chapter 02 | Services and Products - EAP

## EAP

Our development personnel has been participating in [many EAP\(Equipment Application Program\) solution building projects](#) in the semiconductor field such as distribution automation, equipment automation, and system standardization since 2019.

### '19

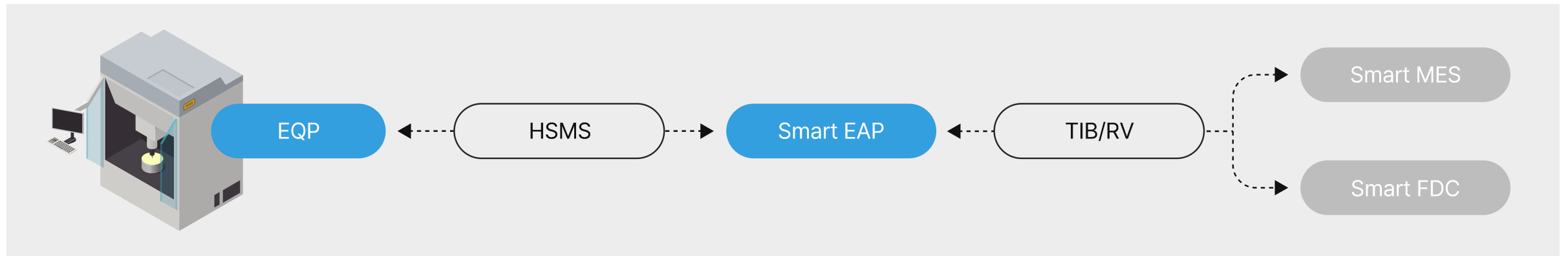
- SKH(Cheong-ju) Wafer Test(Mass Production) Distribution Automation Project
- SKH(Woosi) Wafer Test(Mass Production) System Standardization Project

### '20

- SKH(Icheon) Wafer Test(Development) Equipment Automization Project
- SKH(Cheong-ju) Wafer Test(Development) Equipment Automization Project

### '19~'23

- SKHYSI(Woosi) smart EAP(Equipment Application Program) Standardization Project Development/Management
- SKHYSI(Cheong-ju, Woosi) smart APC(Advance Process Control) Project Development/Management
- SKHY(Icheon) Multi-probe Tester Equipment Solution Development



\*HSMS: High Speed Message Service, \*TIB/RV: TIBCO사에 개발한 소프트웨어 Rendezvous, \*MES: Manufacturing Execution System, \*FDC: Fault Detection and Classification

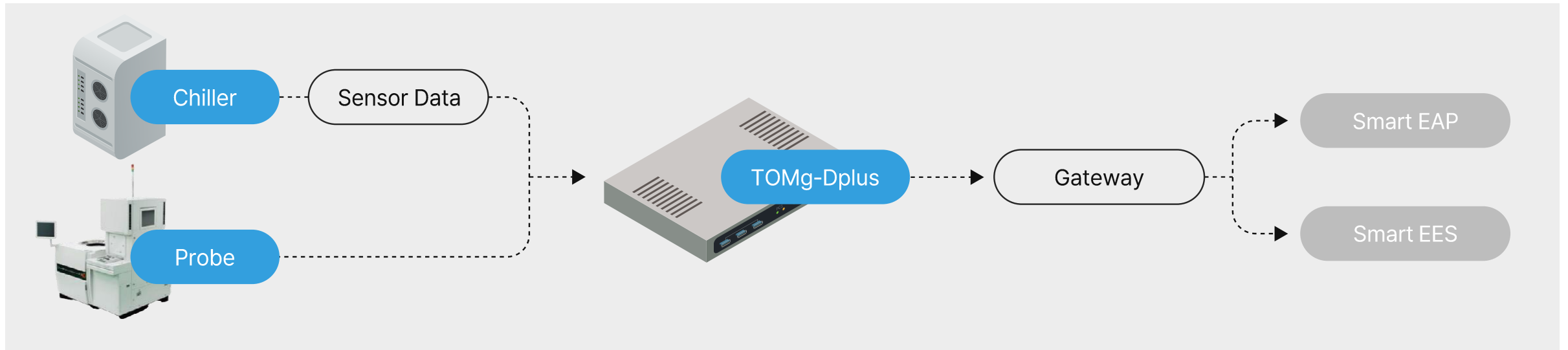
## Chapter 02 | Services and Products - TOMg-Dplus

### TOMg-Dplus

TOMg-Dplus(Non-SECS Data Gathering) is a solution for [the Sensor Data collection of Chiller Equipment](#). It provides the role of collecting Analog Data received from the equipment, converting it into a SECS Message, and sending it to the parent system(smart EAP). It is currently installed and operating in the Wafer Test process.

### Product Characteristics

- Real-time Collection of Sensor Data
- Support of SECS Messages
- Support of Analog Ports
- Used as Data in the Parent System(smart EES & smart EAP)



\*EES: Energy Management and Control System

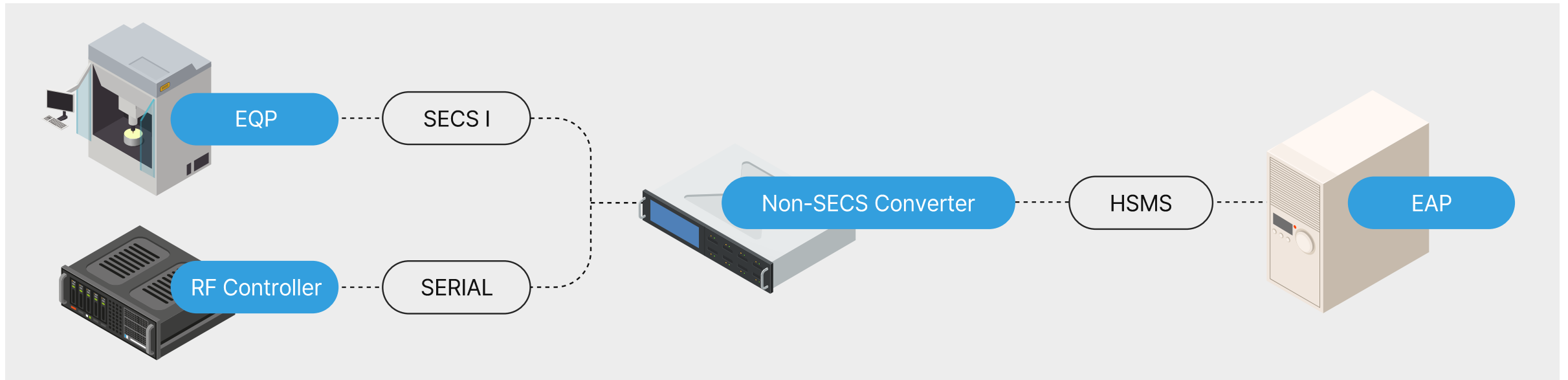
## Chapter 02 | Services and Products – Non-SECS Converter

### Non-SECS Converter

This is a solution that applies/supports the semiconductor standard protocol SEMI Standard to equipment that has restrictions in communicating with the parent system(EAP) so that it can communicate with the parent system. It provides the role of receiving the SECS I data of the main equipment and converting the communication protocol to HSMS and [sending the collected data to the EAP through its own communication protocol with the RF Controller installed in the equipment.](#)

### Product Characteristics

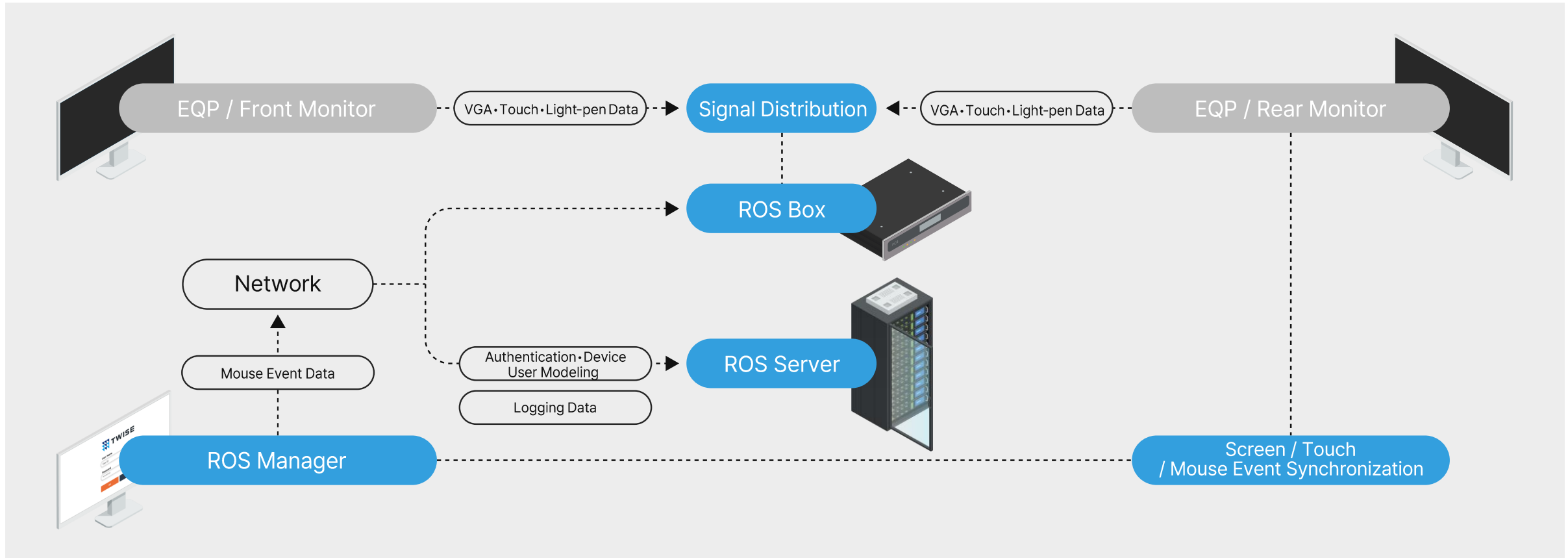
- Complete Support of SECS I, HSMS
- Supports Up to 8 Communication Channels
- Capable of supporting protocol that fits the specifications based on the manufacturing company of the equipment
- Used as Data in the Parent System(smart EAP)



## Chapter 02 | Services and Products - ROS Service

### ROS Service

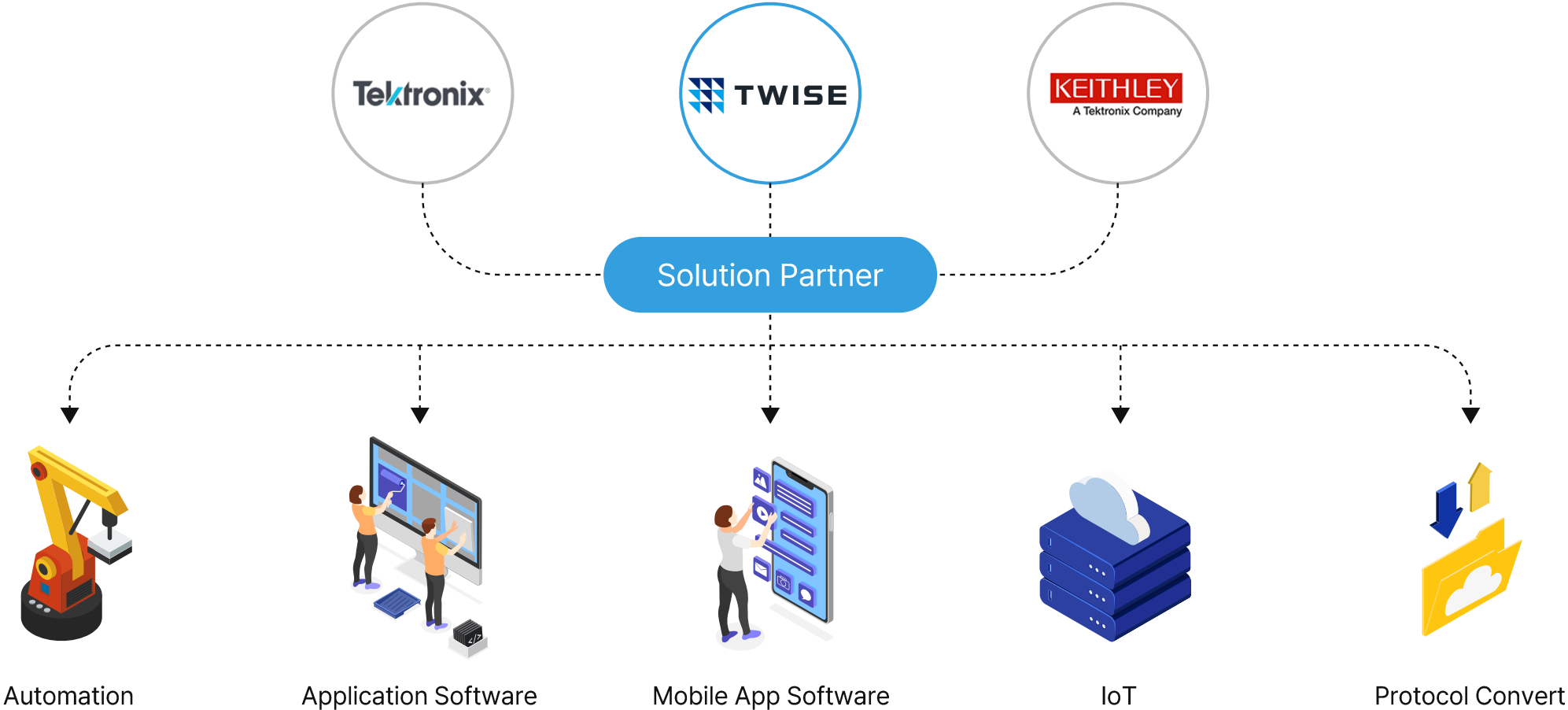
The ROS Service(Remote Operating System) makes remote access from the office to equipment that does not provide remote control possible by installing an ROS Box(H/W). As remote access is possible with the ROS Service, it is a solution that can be expected to reduce cost by **improving working environment and increasing work efficiency**.



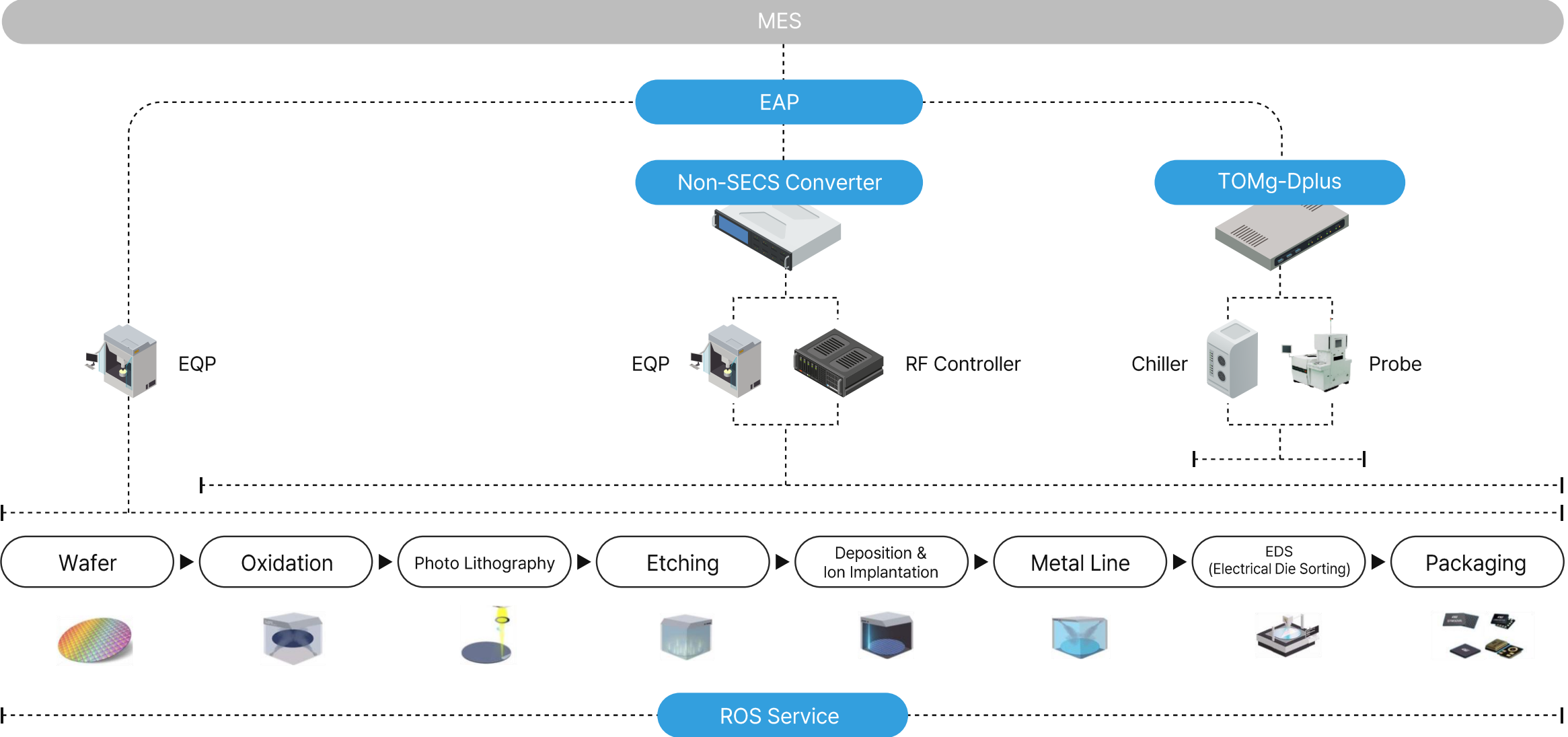
# Chapter 02 | Services and Products - Tektronix Solution Partner

Solution Partner

We solution partnered with universal measurement equipment company Tektronix to provide software solutions and system building services.



# Chapter 02 | Services and Products – Business Areas



# Chapter. 03

---

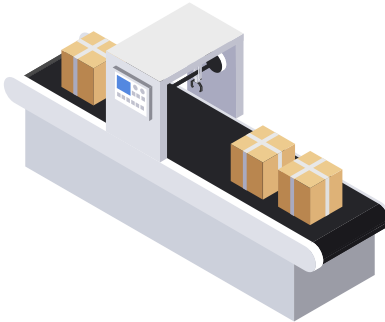
## Warranty

- Warranty Activities • Warranty Policies

# Chapter 03 | Warranty - Warranty Activities

## Warranty Activities

The technology research and warranty teams of Twise guarantee the quality of products following warranty policies through the strict management of products and ex post facto management processes.



Quality Planning

Warranty Activities

Quality Verification

Processing Supply

After-sales management

Quality Improvement  
Maintenance of Quality Safety  
Appliance of New Technology

Establishing Warranty Plans  
Establishing Standards and Processes  
Testing Products

Securing Competitiveness in Quality  
Preemptive Prevention in Quality  
Quality Leadership

Accepting and Processing A/S  
Surveying Customer Satisfaction  
Strengthening Connections with Customers



# Chapter 03 | Warranty - Warranty Policies

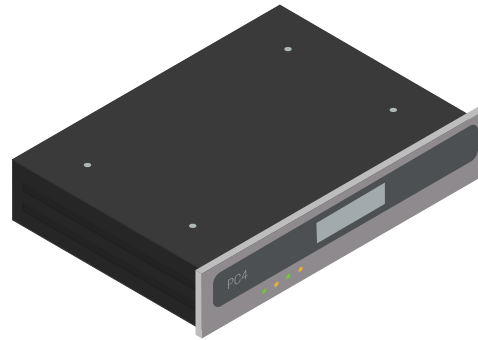
## Warranty Policies

The warranty policies defined at our company are **strictly managed and performed** on all products of Twise.



### Quality Planning

Hardware 1 Year  
Software 1 Year



### Guarantee of Hardware

1 Year Term of Guarantee  
Excludes consumables such as  
DOM/RAM, HDD/SDD



### Guarantee of Software

1 Year Term of Guarantee  
Excludes items such as change in  
structure or addition of functions